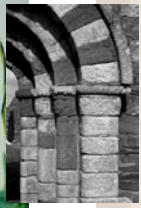
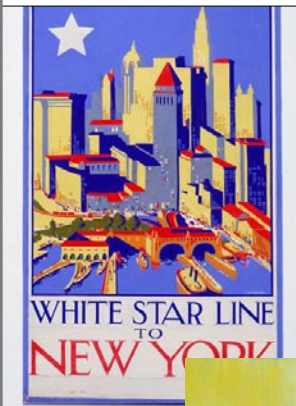




Thousands of digital images **FREE** for educational use



HERALDIC BADGES OF THE TUDOR SOVEREIGNS

Henry VIII joined the Tudor Rose by uniting the red rose of the Kingdom of Lancaster with the white rose of York. The combined rose is represented heraldically and is known as quarterly because it was quarterly on a whole rose upon a red rose.

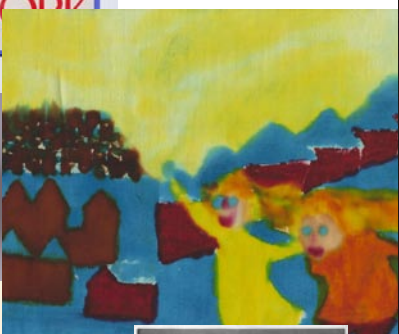
Henry VIII
1509-1547

A rose and portemanteau divided and the explorer HR crowned with a crown. As Henry's accession he united the badges of England and Spain which included the pomegranate of Granada and arrows of Aragon.

Mary I
1553-1558

The Tudor rose impaled by a cross pattée, within a shield of arms or tail with a golden knot upon a stem circular field argent and vert the whole surrounded by eye and cognant within an open crown.

In these designs gold leaf has been used in the following manner: True Massicotting is not gold leaf but a mixture of gold and silver.



© See visualarts.ahds.ac.uk/publicity

